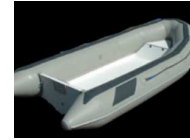


Leisureline



Choose these boats for practically anything you like, water sport, sub-aqua, work horse or just fun....

Dreams do come true! Finally an light RIB designed and built for boaters that require an extremely light and worry-free hard bottom inflatable boat.

The nimble performance and compact size make these ideal tenders or independent craft for carrying crew and provisions. Because these models are so light, excellent performance and astonishing speeds can be achieved even with relatively small outboards.

The Leisure Line models offer the best of both worlds, the lightness, affordability the performance of a V-shaped rigid hull.

Technical Specifications

Model	Length	Inside Length	Beam - Overall	Beam - Inside	Approx. Weight	Tube Dia. mm/in
310	3.10m/10.17ft	2.13m/6.98ft	1.62m/5.30ft	0.82m/2.69ft	50kg/110lb	430mm/16.91in
350	3.53m/11.58ft	2.60m/8.53ft	1.62m/5.30ft	0.82m/2.69ft	55kg/121lb	430mm/16.91in
400	4.00m/12.46ft	2.99m/9.80ft	1.77m/5.80ft	0.82m/2.69ft	65kg/143lb	450mm/17.70in

Model	#Air Chamb	Max. Capac. Weight kg / lb	Max. Cap. Pers.	Recom. HP	Max. HP	Container volumes 20ft	Max. speed km/h - mph	Design category 94/25/CE
310	3+1	400kg/881lb	5	10	15	50	55km/h - 34mph	C
350	3+1	500kg/1102lb	4	25	25	22	48km/h - 30mph	C
400	3+1	750kg/1653lb	5	30	40	19	55km/h - 34mph	C

Standard Equipment:

- S/S bow eye
- Alu. Engine plate
- Alu. Transom plate
- Single fender rub strake all around
- Rope Holders with Lifeline
- Hull drain x 1
- Deck drain x 2
- Paddles x 2
- Paddle holders x 4
- Carry handles x 4
- Inflation pump
- Repair kit
- Instruction manual



Optional equipment:

- Bow bag
- Boat cover
- Sun canopy
- Dolly wheels
- Webbing lifting slings
- Jockey Seat Steering console
- A frame

Visit our website at : <http://www.watercraft.co.za>

All dimensions are approximate / Prices & specifications can be changed without notice.